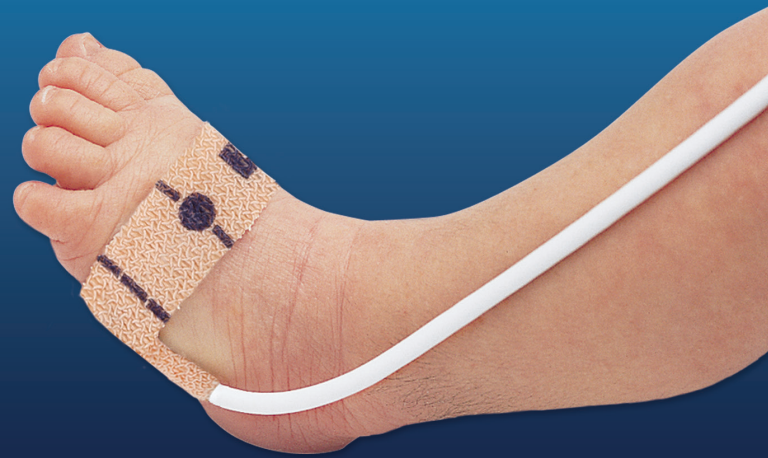


NEONATAL APPLICATION GUIDE

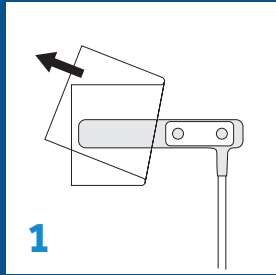
Nellcor™ SpO₂ Adhesive Sensor



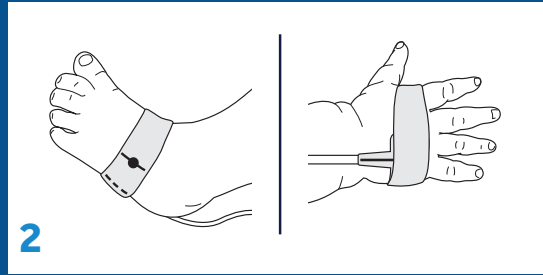
MAXN



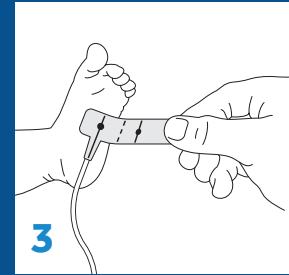
For patients who weigh less than 3 kg.



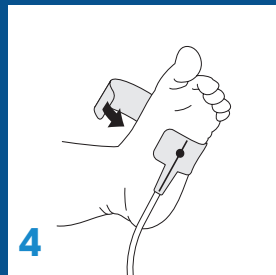
Place the adhesive wrap on a flat surface, fabric side down. Remove the backing.



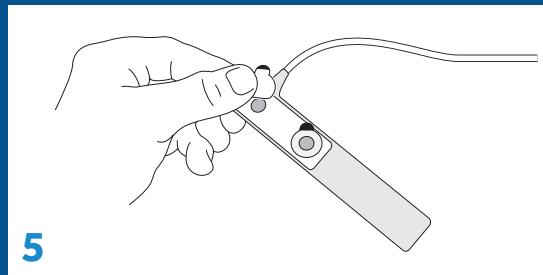
Select a sensor site. The preferred site is the foot below the toes, with the cable running along the sole of the foot. Alternatively, use the palm of the hand. Do not place sensor on the wrist or ankles.



Position the sensor so the dashed line is centered on the lateral edge of the foot or hand.



Wrap the sensor around the site, without stretching the tape, so the optical components directly oppose each other. Anchor the cable with a piece of medical-grade tape. Plug the connector end of the sensor cable into the patient cable attached to the monitor.



The enclosed clear, double-sided adhesive dots can be applied over the light source and photodetector to restore adhesive quality and extend the life of the sensor. Place a transparent dot over each window as shown, then remove the protective paper that covers each dot and reapply to the same patient.

A maximum of three dots may be applied to each window, one on top of another. Removal of a sticky dot from a window may result in damage to the sensor components.

Check sensor site, including skin integrity, at least every eight hours, and change the sensor site as appropriate.

If you have any questions, contact your Medtronic product representative at 800-635-5267.



Read the sensor's "Directions for Use" insert for complete instructions for use, including all warnings, cautions, and specifications, prior to use of this product.

©2017 Medtronic. All rights reserved. Medtronic, Medtronic logo and Further, Together are trademarks of Medtronic. All other brands are trademarks of a Medtronic company. 03/2017-12-PM-0143(1)-[WF# 1537658]

6135 Gunbarrel Avenue
Boulder, CO 80301

800.635.5267

medtronic.com/covidien

Medtronic